

 Deutsche
 Qualität
 Garantiert



60

FULL
CELLS



SHADING
RESISTANT



HOT SPOT
RESISTANT



PID
RESISTANT



SALT CORROSION
RESISTANT



SAND
RESISTANT



AMMONIA
RESISTANT



HIGHLY STABLE
AND TOUGH



 tested by
Fraunhofer
 CSP

HSF

**SMART HOT-SPOT FREE
 SHADING RESISTANT
 TECHNOLOGY**

Maximizing the energy yield

30
years

Performance
Guarantee

15
years

Product
Warranty

MONO-CRYSTALLINE PV MODULES
 FULL CELLS • MONO-FACIAL

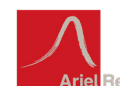
325W-335W
AE SMB-60 Series

* The concept of hot-spot-free module is tested and evaluated by Fraunhofer CSP under partial shading conditions.
 The report can be found [here](#) and the peer-reviewed publication in Solar Energy Journal can be found [here](#)



IEC 61215
 IEC 61730
 Regular Production Surveillance
 Type Tested and Monitored

IEC 62716 (Ammonia corrosion)
 IEC 61701 (Salt mist corrosion)
 IEC 60068 (Sand and dust)
 IEC 62804 (PID resistance)

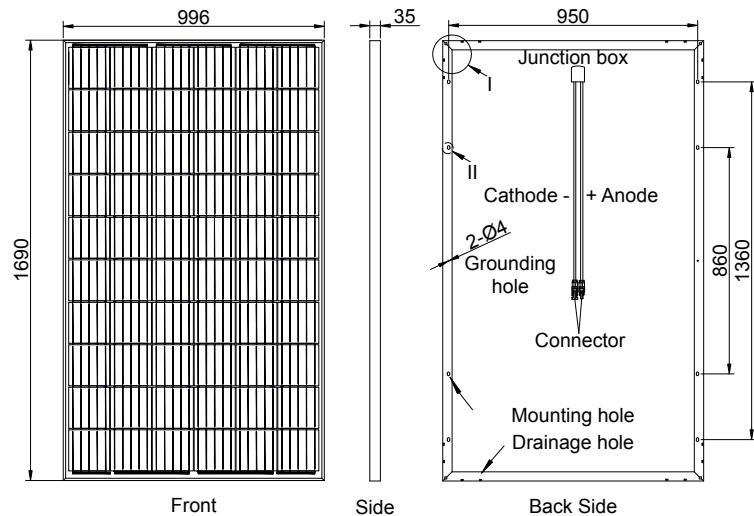


www.ae-solar.com

AE SMB-60 Series 325W-335W

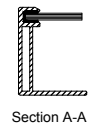
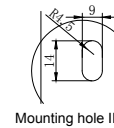
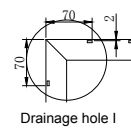
Mechanical and design specification

Cell type	Mono c-Si PERC, Full cells, 158.75mm
No. of cells	60
Glass	3,2 mm, high transmission, AR coated, tempered
Encapsulation	EVA
Back cover	White Backsheet
Junction box	IP 68 rated
Frame	35 mm anodized Aluminium alloy
Cable	1 x 4 mm ² , 900 mm length or customized
Connectors	MC 4 / MC 4 compatible
Dimension	1690 mm x 996 mm x 35 mm
Weight	19 kg
Hail resistance	Max. Ø 25 mm at 23 m/s
Wind load	2400 Pa/ 244 kg/ m ²
Mechanical load	5400 Pa/ 550 kg/ m ²



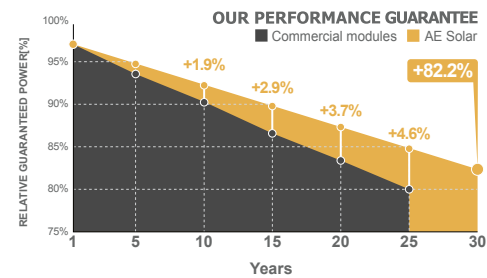
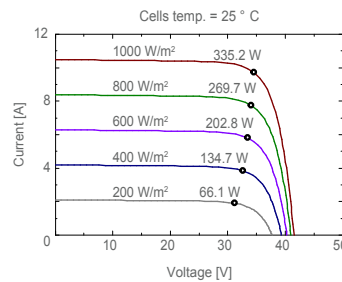
Packaging information

Packaging configuration	66 pcs / double pallet
Loading capacity	858 pcs / 40 HQ
Size / Pallet	1725 mm x 1140 mm x 2395 mm
Weight	1355 kg / double pallets



Temperature ratings

Operating temperature (°C)	-40 to +85
Temp. coefficient of P _{max} (%/°C)	-0.37
Temp. coefficient of V _{oc} (%/°C)	-0.28
Temp. coefficient of I _{sc} (%/°C)	0.048
Nom. operating temp. NOCT (°C)	45 ± 2



Electrical specifications (STC*):	AE325SMB-60	AE330SMB-60	AE335SMB-60	
Nominal Max. Power	P _{max} (Wp)	325	330	335
Maximum operating voltage	V _{MPP} (V)	33.61	33.81	34.02
Maximum operating current	I _{MPP} (A)	9.68	9.76	9.85
Open-circuit voltage	V _{oc} (V)	41.10	41.31	41.49
Short-circuit current	I _{sc} (A)	10.20	10.37	10.49
Module efficiency	η (%)	19.31	19.61	19.90
Power tolerance	(W)		0~+5	
Maximum system Voltage	(V)		1500	
Maximum series fuse rating	(A)		15	

*STC: Standard test conditions (Irradiance 1000 W/m², Cell temperature 25°C and air mass of AM1.5)

Electrical specifications (NMOT*):	AE325SMB-60	AE330SMB-60	AE335SMB-60	
Nominal Max. Power	P _{max} (Wp)	245	248	252
Maximum operating voltage	V _{MPP} (V)	31.60	31.80	32.00
Maximum operating current	I _{MPP} (A)	7.74	7.81	7.88
Open-circuit voltage	V _{oc} (V)	37.90	38.10	38.30
Short-circuit current	I _{sc} (A)	8.16	8.30	8.39

*NMOT: Normal Module Operating Temperature (Irradiance 800 W/m², Ambient temperature 20°C, air mass of AM1.5 and wind speed of 1 m/s)

The specifications and characteristics contained in this datasheet may deviate slightly from our actual products due to the product developments and uncertainty of measurement devices. The specifications included in the datasheet are subject to change without prior notice.

